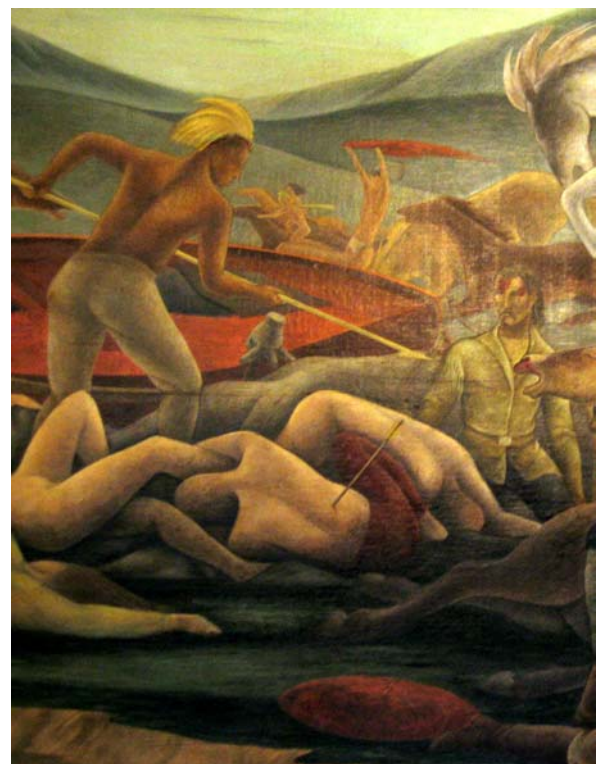


*Dangers of the Mail*, Frank A. Mechau



Details



*Dangers of the Mail*, Frank A. Mechau

Detail captioned "Torture at the Stake"



Detail



*Pony Express*, Frank A. Mechau

Detail captioned "Death on the Prairie"



Detail captioned "The Red Man takes the Mochila"



Detail captioned "Stealing Horses from a Station"



Makeshift barriers in front of *Pony Express* and *Dangers of the Mail*



*Covered Wagon Attacked by Indians*, William C. Palmer



Detail



*Opening of the Southwest*, Ward Lockwood



Detail



Consolidation of the West, Ward Lockwood



Detail



*French Explorers and Indians*, Karl R. Free,

